

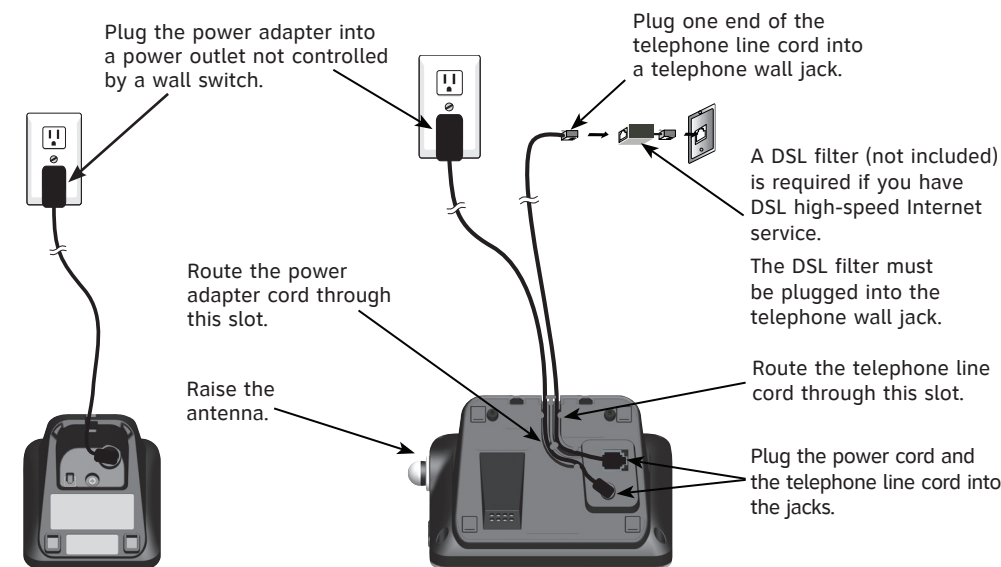


Quick start guide

TL92271/TL92321/TL92371/TL92421/TL92471

This quick start guide provides you with basic instructions only. For more complete instructions, refer to your user's manual provided in the package, or see the online user's manual at www.telephones.att.com/manuals.

Telephone base and charger installation



Plug the power adapter into a power outlet not controlled by a wall switch.

Plug one end of the telephone line cord into a telephone wall jack.

A DSL filter (not included) is required if you have DSL high-speed Internet service. The DSL filter must be plugged into the telephone wall jack.

Route the power adapter cord through this slot.

Raise the antenna.

Route the telephone line cord through this slot.

Plug the power cord and the telephone line cord into the jacks.

Caution: Use only the power adapter provided with this product. To obtain a replacement, visit our website at www.telephones.att.com or call 1 (800) 222-3111. In Canada, dial 1 (866) 288-4268.

Battery installation

Install the battery as shown below. Charge your handset(s) before initial use. The battery is fully charged after 16 hours of continuous charging.



Step 1

Plug the battery connector securely into the socket inside the handset battery compartment. Insert the supplied battery with the label **THIS SIDE UP** facing up as indicated.



Step 2

Align the cover flat against the battery compartment, then slide it upwards until it clicks into place.

CHARGE light



Step 3

Charge the handset by placing it face forward in the telephone base or charger. The **CHARGE** light on the top of the handset is on during charging.

Quick reference guide - handset

Softkeys (2)

- Show the menu.
- Select an item or save an entry or setting.

CHARGE light

- On when the handset is charging.

CELLULAR

- Make or answer a cell call.
- Answer a call waiting call during a cell call.

HOME/FLASH

- Make or answer a home call.
- Answer a call waiting call during a home call.

1

- Press repeatedly to add or remove 1 in front of the call log entry before dialing or saving it to the directory.

TONES ✕

- Switch to tone dialing temporarily during a call if you have pulse service.
- Toggle the name order when saving a caller ID log entry into directory.

)/SPEAKER

- Make or answer a home or cell call using the speakerphone.
- Switch between the speakerphone and the handset.

REDIAL/PAUSE

- Press repeatedly to view the last 10 numbers dialed.
- Press and hold to insert a dialing pause while entering numbers.

EQ

- During an outside call, intercom call, message or announcement playback, press to change the quality of the audio to best suit your hearing.

DIR▲/VOLUME

- Scroll up in menus.
- Increase listening volume when on a call or message playback.
- Show directory entries.
- Move the cursor to the left while entering names or numbers.

MUTE/DELETE

- Mute the microphone during a call.
- Delete digits while predialing.
- Delete an individual entry while reviewing the redial list, directory or caller ID history.
- Erase a digit or character while entering or editing a directory entry.
- Silence the ringer temporarily.
- Delete a message or announcement during message or announcement playback.

OFF/CANCEL

- Cancel an operation, back up to the previous menu, or exit the menu display while using menus.
- Press and hold to return to idle mode.
- Hang up a call.
- Press and hold to erase all the Missed calls or Download fail messages.
- Silence the ringer temporarily.

CID▼/VOLUME

- Scroll down in menus.
- Decrease listening volume when on a call or message playback.
- Show caller ID history.
- Move the cursor to the right while entering names or numbers in the directory.

(pound key)

- Press repeatedly to display other dialing options when reviewing a caller ID history entry.



PUSH TO TALK

- Press to display the PTT menu to begin a PTT call.
- Press and hold to begin a one-to-group broadcast when the handset is not in use.

Quick reference guide - telephone base

ANS ON

- Press to turn the answering system on or off.

/HANDSET LOCATOR

- Press to page all system handsets.
- Press and hold to begin handset deregistration.

/REPEAT

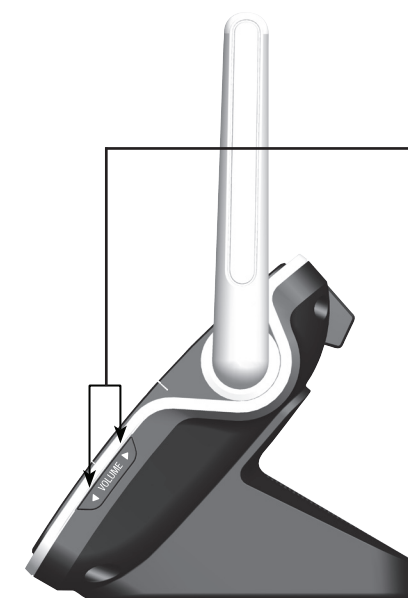
- Press to repeat a message or press twice to play the previous message.

Message counter

- Number of messages (or during playback, message number currently playing).

IN USE light

- On when the handset is in use, when the answering system is answering an incoming call, or when you are registering a handset.



▼ VOLUME ▲

- Press to adjust the volume during message playback.
- When the phone is not in use, press to adjust the telephone base ringer volume.

▶/PLAY/STOP

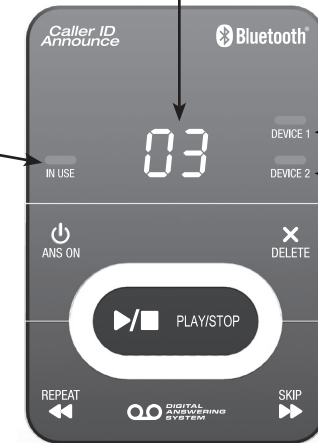
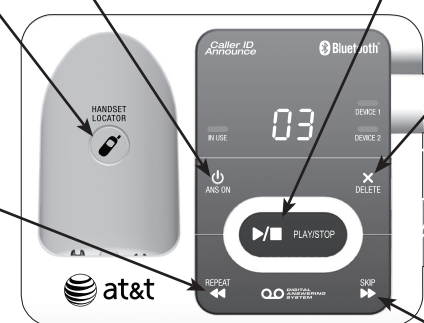
- Press to play messages.
- Press to stop message playback.

X/DELETE

- Press to delete the message currently playing.
- When the phone is not in use, press twice to delete all previously reviewed messages.

▶/SKIP

- Press to skip to the next message.



DEVICE1/DEVICE2 lights

- On when the telephone base is paired and connected with a Bluetooth device.

Initial settings

We recommend you program your telephone system before use.

The following are a few examples of common features to set before using the telephone. Refer to the **Handset settings** and **Answering system settings** in the user's manual for detailed instructions on setting all telephone features.

Set date/time

Set the date/time before using the answering system.

Using a cordless handset:

1. **MENU** -> ▼ or ▲ -> **Set date/time** -> **SELECT**.
2. Enter the month, day and year using the dialing keys -> **SET**.
3. Enter the hour and minute using the dialing keys.
4. ▼ or ▲ to choose **AM** or **PM** -> **SET**.

Record your own announcement

Your outgoing announcement plays when calls are answered by the answering system. You can use the preset announcement to answer calls, or replace it with your own recorded announcement.

Using a cordless handset:

1. **MENU** -> ▼ or ▲ -> **Answering sys** -> **SELECT**.
2. **SELECT** to select **Announcement** -> **RECORD**.
3. Facing the handset, record your announcement and press **STOP** to end recording.

Number of rings

You can set the answering system to answer an incoming call after 2, 3, 4, 5 or 6 rings, or toll saver. If you choose toll saver, the answering system answers a call after two rings if you have new messages, or after four rings when there are no new messages.

If you want the built-in answering system instead of the voicemail to answer a call, you should set the answering system to answer a call at least two rings before the voicemail is set to answer. Contact your telephone service provider for information on your voicemail settings.

Using a cordless handset:

1. **MENU** -> ▼ or ▲ -> **Answering sys** -> **SELECT**.
2. ▼ or ▲ -> **Ans sys setup** -> **SELECT**.
3. ▼ or ▲ -> **# of rings** -> **SELECT**.
4. ▼ or ▲ to choose among **6, 5, 4, 3, 2** or **Toll saver** -> **SET**.

Ringer volume

You can set the ringer volume level to one of the six levels or turn the ringer off.

Using a cordless handset:

1. **MENU** -> ▼ or ▲ -> **Ringers** -> **SELECT**.
2. **SELECT** to select **Ringer volume**.
3. ▼ or ▲ -> **All lines, Home, Cell-D1** or **Cell-D2** -> **SELECT**.
4. ▼ or ▲ to choose the desired level -> **SET**.

Caution: Use only the supplied rechargeable battery or replacement battery (model BT166342).

Bluetooth® setup

The following are a few common Bluetooth features to set. Refer to the **Bluetooth setup** section in the user's manual provided in the package for more details.

When you pair a Bluetooth cell phone or Bluetooth headset to the telephone base, keep the device within 15 feet of the telephone base for optimal performance.

Add a cell phone
<p>To pair and connect a cell phone using a cordless handset:</p> <ol style="list-style-type: none"> 1. MENU -> ▼ or ▲ -> Bluetooth -> SELECT. 2. SELECT to select Add device. 3. ▼ or ▲ -> Add cellular -> SELECT. 4. Disconnect the cell phone from any Bluetooth device -> NEXT. 5. Place the cell phone next to the telephone base. 6. NEXT to turn on the telephone base discoverable mode. 7. Turn on the Bluetooth feature of your cell phone and search for or add new advices. 8. Enter the cell phone passcode (typically 0000) if required -> SET. 9. Enter the PIN (default PIN: 0000) of the telephone base into your cell phone.
Add a headset
<p>To pair and connect a headset using a cordless handset:</p> <ol style="list-style-type: none"> 1. MENU -> ▼ or ▲ -> Bluetooth -> SELECT. 2. SELECT to select Add device. 3. ▼ or ▲ -> Add headset -> SELECT. 4. Disconnect your headset from any Bluetooth device -> NEXT. 5. Set your headset to discoverable mode -> NEXT. 6. ▼ or ▲ to choose your headset -> SELECT. 7. Enter the PIN (typically 0000) of your headset and press NEXT.
Download directory
<p>Before downloading a directory, make sure the cell phone is paired, active, and connected to your TL92271/TL92321/TL92371/TL92421/TL92471.</p> <p>To download a cell phone directory using a cordless handset.</p> <ol style="list-style-type: none"> 1. MENU -> ▼ or ▲ -> Bluetooth -> SELECT. 2. ▼ or ▲ -> Download dir -> SELECT. 3. ▼ or ▲ to select the desired device if necessary -> SELECT. 4. ▼ or ▲ -> Phone memory, SIM card only or Phone and SIM -> SELECT. 5. Enter the cell phone passcode if necessary, then press SET. 6. Press OK to return to the Bluetooth menu when the download is complete.

Telephone operation

Operation	Steps
Making a call	<p>To make a home call Press HOME or)/SPEAKER -> Enter the telephone number.</p> <p>To make a cell call Press CELLULAR -> Enter the telephone number -> DIAL.</p>
On-hook dialing (predialing)	<p>To predial a home call Enter the telephone number -> Press HOME or)/SPEAKER to call.</p> <p>To predial a cell call Enter the telephone number -> Press CELLULAR to call.</p>
Answering a call	<p>To answer a home call Press HOME or)/SPEAKER.</p> <p>To answer a cell call Press CELLULAR.</p>
Ending a call	<p>To end a home call Press OFF or put the handset to the telephone base or charger.</p> <p>To end a cell call Press OFF or put the handset to the telephone base or charger.</p>
Handset speakerphone	During a call, press)/SPEAKER to switch between handsfree speakerphone and normal handset use.
Redial	<p>To dial a redial entry using the home line Press REDIAL repeatedly to select the desired entry -> HOME or)/SPEAKER to call.</p> <p>To dial a redial entry using the cell line Press REDIAL repeatedly to select the desired entry -> CELLULAR to call.</p>
Volume control	Press VOLUME ▼ to decrease or press VOLUME ▲ to increase the listening volume during a call.
Call waiting (Requires subscription from telephone service provider)	<p>On home line Press FLASH to put current call on hold and to take the new call; press again to switch back and forth between calls.</p> <p>On cell line Press CELLULAR to put current call on hold and to take the new call; press again to switch back and forth between calls.</p> <p>-OR- Press SWAP to switch. To switch back, press OPTION -> ▼ or ▲ to highlight Swap -> SELECT.</p>

Caller ID

This product supports caller ID services offered by most telephone service providers. The telephone stores caller ID information of the last 50 incoming calls in the telephone base. This information is common to all devices.

Missed call indicator
When a handset is in idle mode and has new or missed calls, its screen shows XX Missed calls .
You can erase the missed call indicator either by reviewing the call log one by one, or by pressing and holding CANCEL on the handset in idle mode.
Review and dial a number in the call log
<ol style="list-style-type: none"> 1. CID in idle mode -> ▼ or ▲ to select the desired line -> REVIEW. 2. ▼ or ▲ to scroll through the list. 3. HOME or)/SPEAKER to dial with the home line. <p>-OR- CELLULAR to dial with the cell line.</p>
Caller ID announce
When this feature is on and you have an incoming call, the handset and/or base speaks <i>"Call from..."</i> and the name of the caller based on the directory or caller ID information. You can turn this feature off for the base or each individual handset, or both.
<ol style="list-style-type: none"> 1. MENU -> ▼ or ▲ -> Settings -> SELECT. 2. ▼ or ▲ -> Caller ID Annc -> SELECT. 3. ▼ or ▲ to choose Handset or Base -> SELECT. 4. ▼ or ▲ to choose On or Off -> SET.

Directory

The home directory can store up to 200 entries, which are shared by all system devices.

Operation	Steps
Adding an entry in the home directory	<ol style="list-style-type: none"> 1. MENU. 2. ▼ or ▲ -> Directory -> SELECT. 3. OPTION to select Home 4. SELECT to select Add contact. 5. Enter a telephone number up to 30 digits -> SELECT. 6. ▼ or ▲ to select Home, Cell, Work or Other -> NEXT. 7. Enter a name up to 15 characters -> SAVE.
Searching/dialing an entry	<ol style="list-style-type: none"> 1. DIR in idle mode -> ▼ or ▲ to select the desired line -> REVIEW. 2. Press ▼ or ▲ to browse through the directory, or press the dialing keys (0-9) to start a name search. 3. Press HOME or)/SPEAKER to call using the home line. <p>-OR- Press CELLULAR to call using the cell line.</p>

Answering system

About answering system and voicemail																				
Your telephone has separate indicators for two different types of voice messages: those left on the built-in answering system and those left at your telephone service provider's voicemail. To listen to messages recorded on the built-in answering system, refer to the Message playback section below; to listen to voicemail, contact your telephone service provider for more information.																				
Turn answering system on/off																				
The answering system must be turned on to answer and record messages.																				
Using the telephone base: Press ANS ON to turn the answering system on or off. If the answering system is turned on, it announces, <i>"Calls will be answered."</i> If the answering system is turned off, it announces, <i>"Calls will not be answered."</i>																				
Message alert tone																				
When this feature is on, and there is at least one new message, the telephone base beeps every 10 seconds.																				
<ol style="list-style-type: none"> 1. MENU -> ▼ or ▲ -> Answering sys -> SELECT. 2. ▼ or ▲ -> Ans sys setup -> SELECT. 3. ▼ or ▲ -> Msg alert tone -> SELECT. 4. ▼ or ▲ to choose On or Off -> SET. 																				
Call screening																				
Use this feature to choose whether incoming messages can be heard over at telephone base when they are being recorded. If you turn call screening on, you hear the incoming message at the telephone base. While monitoring an incoming message, you can answer the call by pressing HOME or)/SPEAKER on the handset.																				
<ol style="list-style-type: none"> 1. MENU -> ▼ or ▲ -> Answering sys -> SELECT. 2. ▼ or ▲ -> Ans sys setup -> SELECT. 3. SELECT to select Call screening. 4. ▼ or ▲ to choose On or Off -> SET. 																				
Message playback																				
Using the telephone base: Press PLAY when the telephone base is in idle mode.																				
Using a handset:																				
<ol style="list-style-type: none"> 1. MENU. 2. SELECT to select Play messages. 																				
Options during playback																				
Feature	On the telephone base	On a handset	Adjust playback volume	Press)/VOLUME/▲	Press ▼VOLUME or ▲VOLUME	Stop playback	Press PLAY/STOP	Press OFF	Skip to the next message	Press SKIP	Press SKIP	Repeat the message	Press REPEAT	Press REPEAT	Play the previous message	Press REPEAT twice	Press REPEAT twice	Delete the message	Press X/DELETE	Press DELETE
Feature	On the telephone base	On a handset																		
Adjust playback volume	Press)/VOLUME/▲	Press ▼VOLUME or ▲VOLUME																		
Stop playback	Press PLAY/STOP	Press OFF																		
Skip to the next message	Press SKIP	Press SKIP																		
Repeat the message	Press REPEAT	Press REPEAT																		
Play the previous message	Press REPEAT twice	Press REPEAT twice																		
Delete the message	Press X/DELETE	Press DELETE																		

For more detailed instructions, please refer to the **TL92271/TL92321/TL92371/TL92421/TL92471 DECT 6.0 cordless telephone/answering system with BLUETOOTH® wireless technology** user's manual provided in your package, or see the online user's manual at **www.telephones.att.com/manuals**.

For customer service or product information, visit our website at **www.telephones.att.com** or call **1 (800) 222-3111**. In Canada, dial **1 (866) 288-4268**.

The *Bluetooth*® word mark and logos are owned by Bluetooth SIG, Inc. and any use of such marks by Advanced American Telephones and its parent, VTech Holdings Limited, is under license. VTech Holdings Limited is a member of Bluetooth SIG, Inc. Other trademarks and trade names are those of their respective owners.

© 2011-2014 Advanced American Telephones. All Rights Reserved.
AT&T and the AT&T logo are trademarks of AT&T Intellectual Property licensed to Advanced American Telephones, San Antonio, TX 78219.
Printed in China. Issue 7.0 AT&T 04/14.